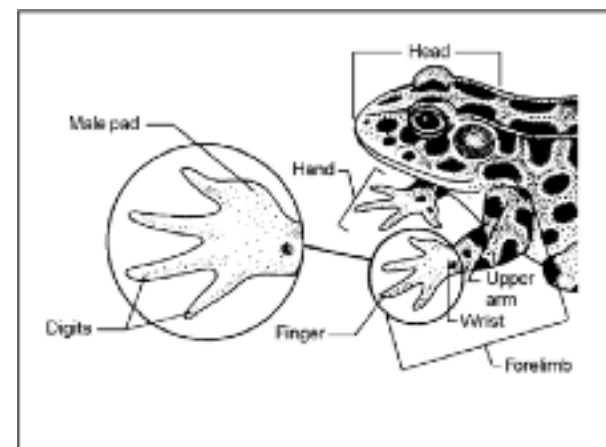
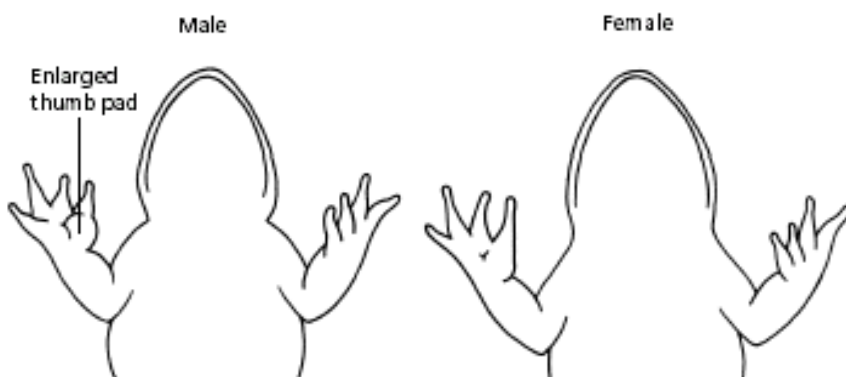
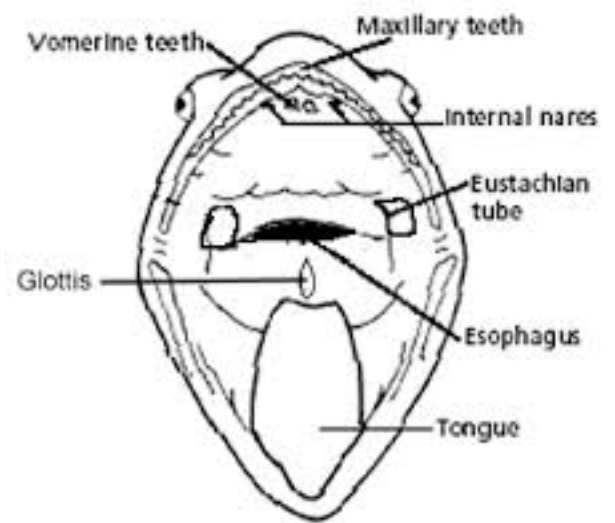
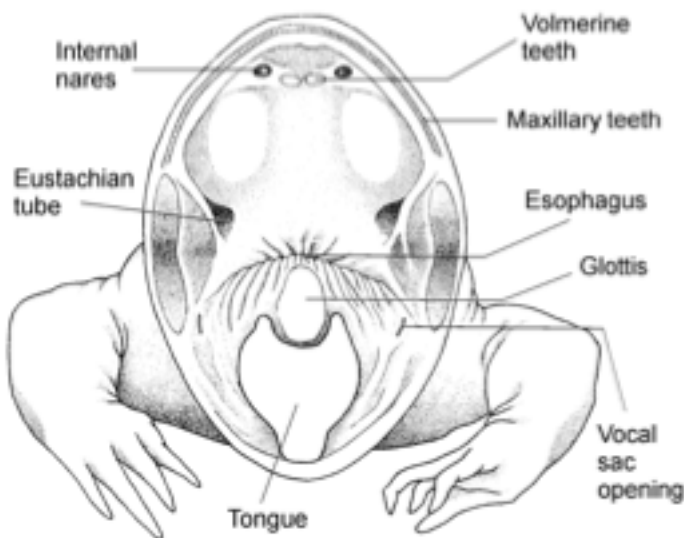
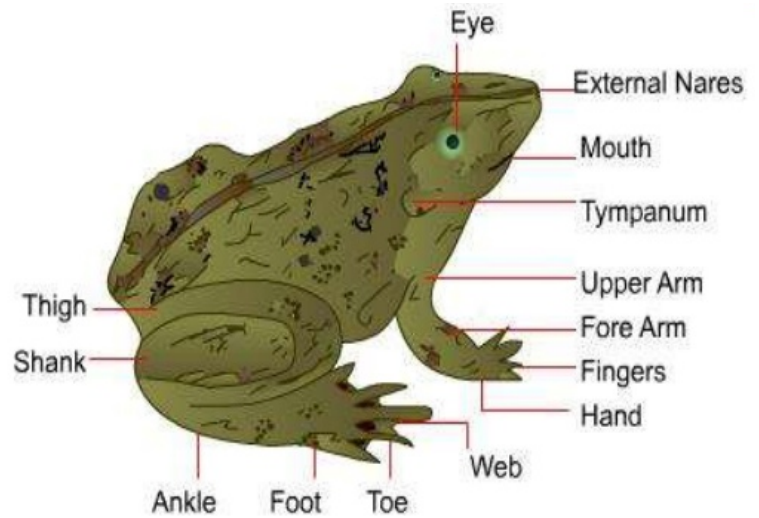
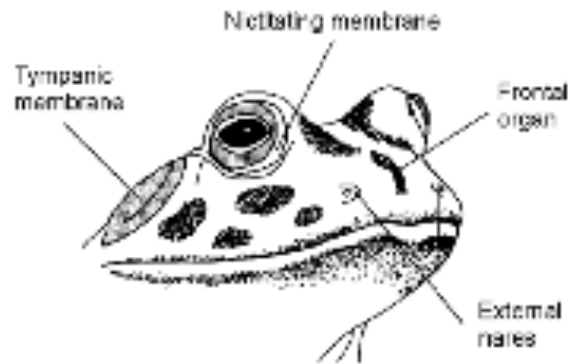
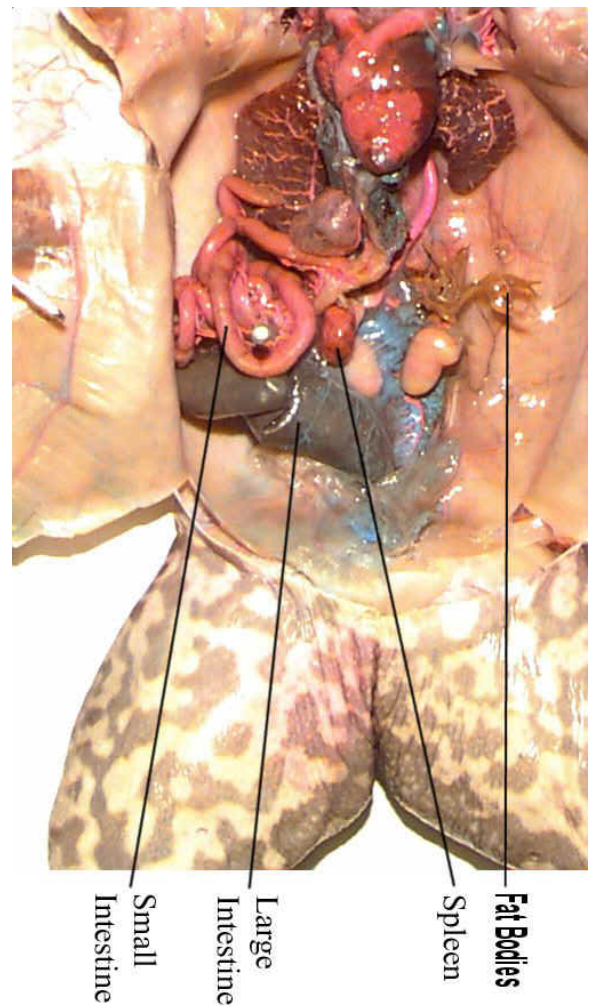
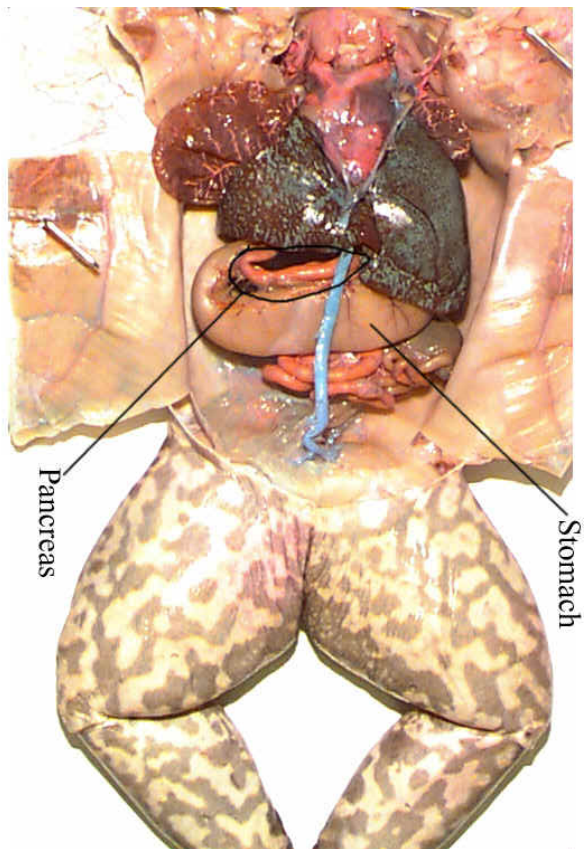
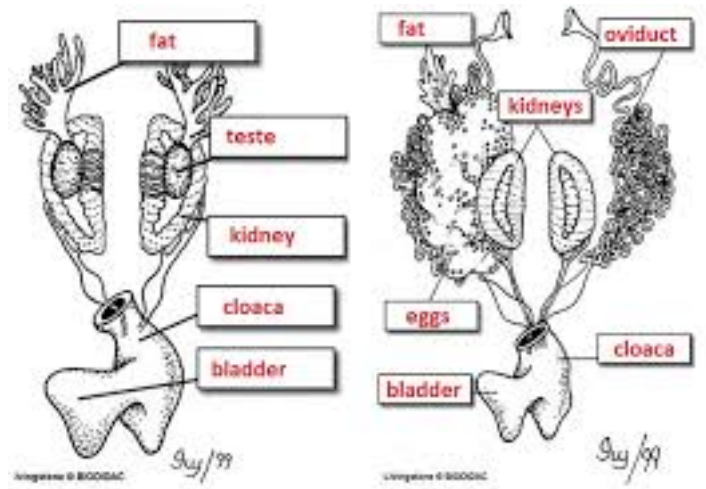
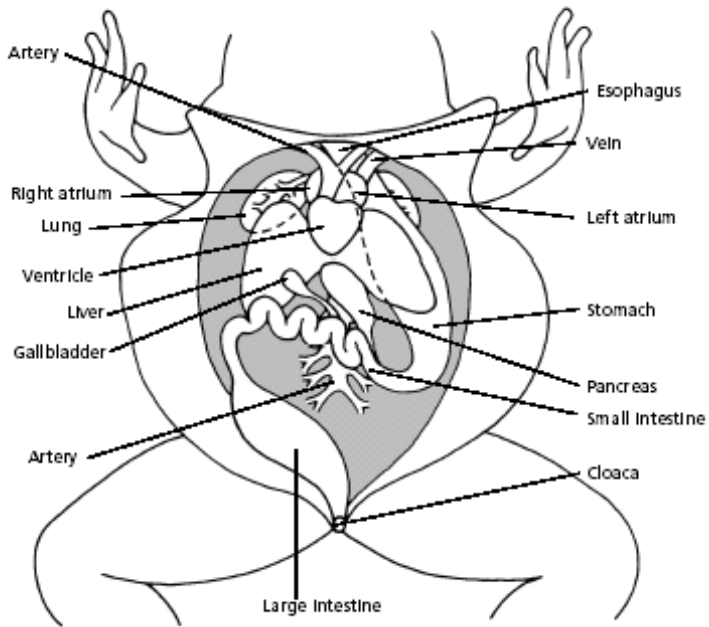


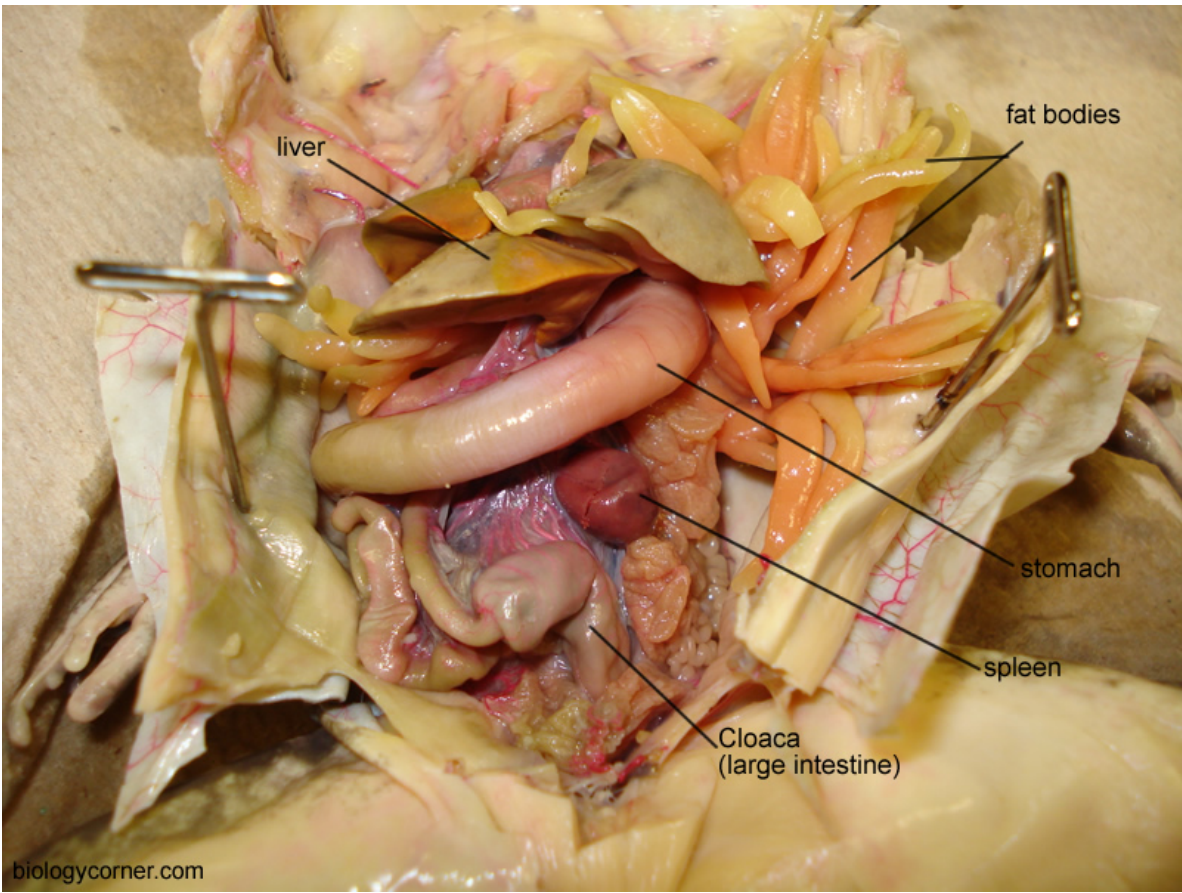
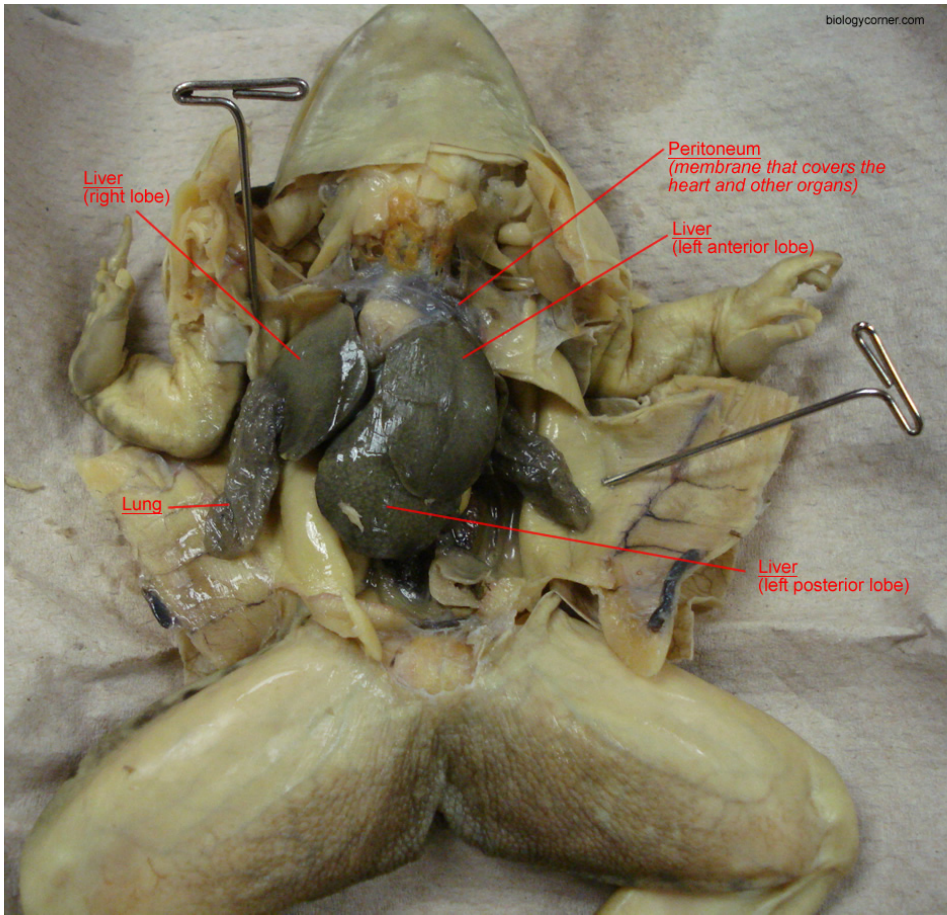
Dorsal – toward the back
Ventral – toward the belly

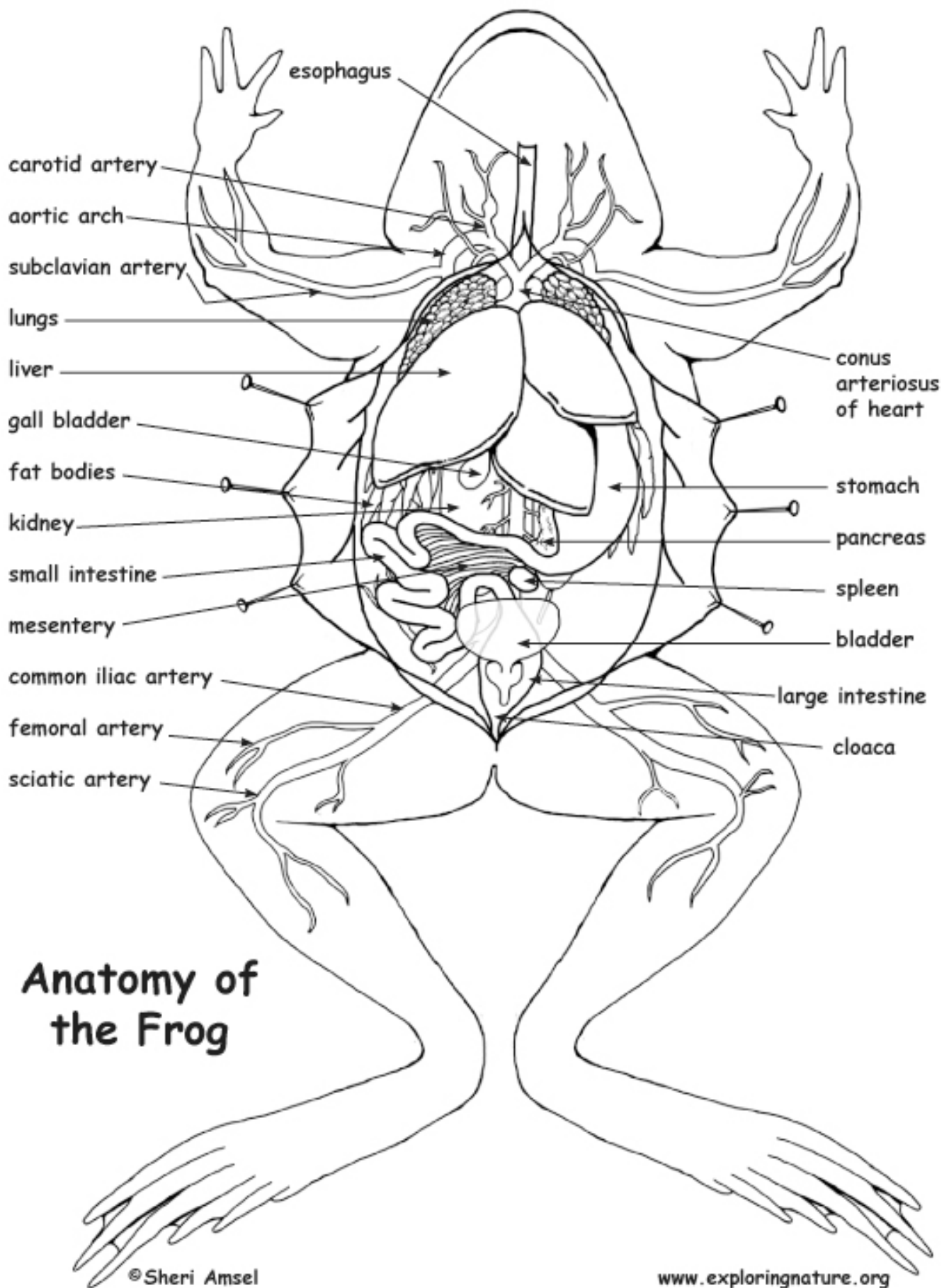
Anterior – toward the head
Posterior – toward the tail



Abdominal and Chest Cavities of the Frog







Froggy Questions

What is the protective covering over the eye called?

What organ does a frog have for hearing?

How many toes are on the forelimbs?

How many toes are on the hind limbs?

What is the opening called where air enters the lungs?

What is the opening called where food enters the stomach?

Where are the teeth located in a frog's mouth?

How many chambers in a frog's heart?

What is the male reproductive organ?

What is the female reproductive organ?

What is the organ that filters blood?

How can you tell a male vs female frog?